

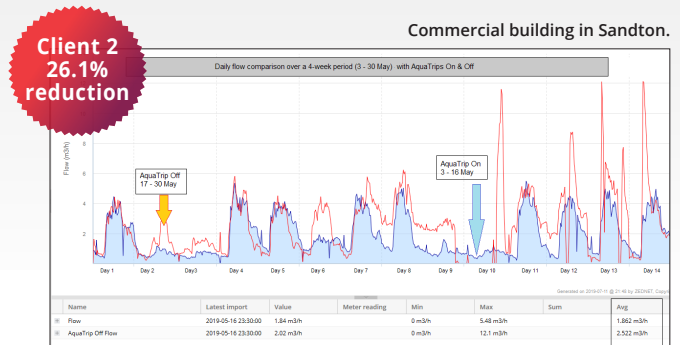
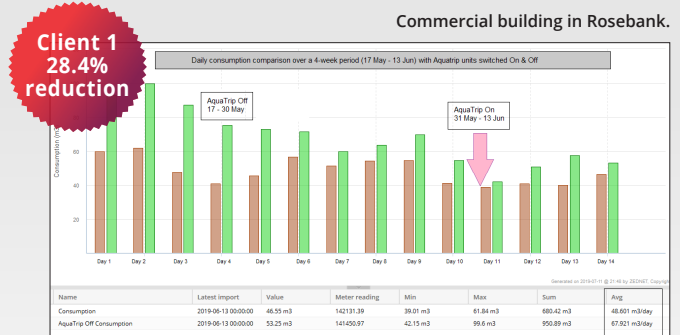
# Water-on-Demand

## WIRELESS INFRARED SENSOR(S) & RECEIVER FOR AT201

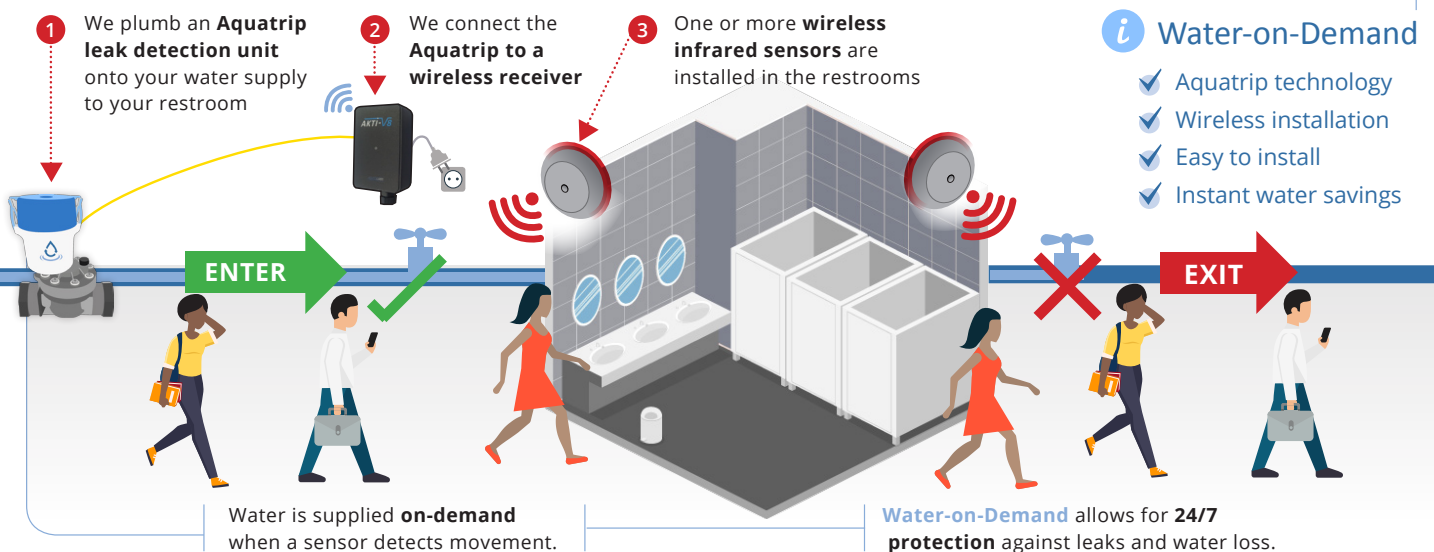
The system is designed to switch an Aquatrip AT201 device on & off wirelessly and provide water-on-demand for an immediate reduction in water consumption

- An Aquatrip is plumbed into a bathroom
- The wireless sensor detects the presence of a person
- The sensor communicates wirelessly with the receiver
- The Aquatrip then provides water-on-demand (if it had switched the water off for a leak)
- Each sensor is battery powered making installation & placement exceptionally simple
- Multiple sensors can link to one Aquatrip unit
- One sensor can link to multiple Aquatrip units

For use in commercial buildings, schools, municipal buildings, restaurants & shopping malls.



## An innovative solution to reducing water use in restrooms



## Access instant savings with water-on-demand

Wireless infrared sensor	Wireless Receiver	Aquatrip AT201
<ul style="list-style-type: none"> <li>• Detection method: Passive Infrared, motion sensitive</li> <li>• Detection range: 5m</li> <li>• Power source: 3*AAA alkaline cells</li> <li>• Dimensions (ceiling mount): 110mm (L) 110mm (W) 42mm (H)</li> <li>• Dimensions (wall mount): 110mm (L) 110mm (W) 66mm (H)</li> <li>• Transmission frequency: 868MHz ISM band</li> <li>• Battery Current consumption: (sensing, no transmission) &lt;30uA</li> <li>• Channel settings: 64 channels available</li> </ul>	<ul style="list-style-type: none"> <li>• Power source: 9-30VDC polarity protected</li> <li>• Overall size: 115mm (L) 60mm (W) 23mm (H)</li> <li>• Reception frequency: 868MHz ISM band</li> <li>• Current consumption: &lt;100mA</li> <li>• Channel settings: 64 channels available</li> </ul>	<ul style="list-style-type: none"> <li>• Battery operated, programmable leak detection device</li> <li>• Dimensions: 840mm (L) x 770mm (W) x 179mm (H)</li> <li>• Supplied with 25mm PVC valve</li> <li>• Operating pressure: 150PSI</li> <li>• Operating temperature: 0°C - 50°C</li> <li>• Flow sensing from 50ml/min</li> <li>• Power supply 9v alkaline battery</li> </ul>